



Citrine

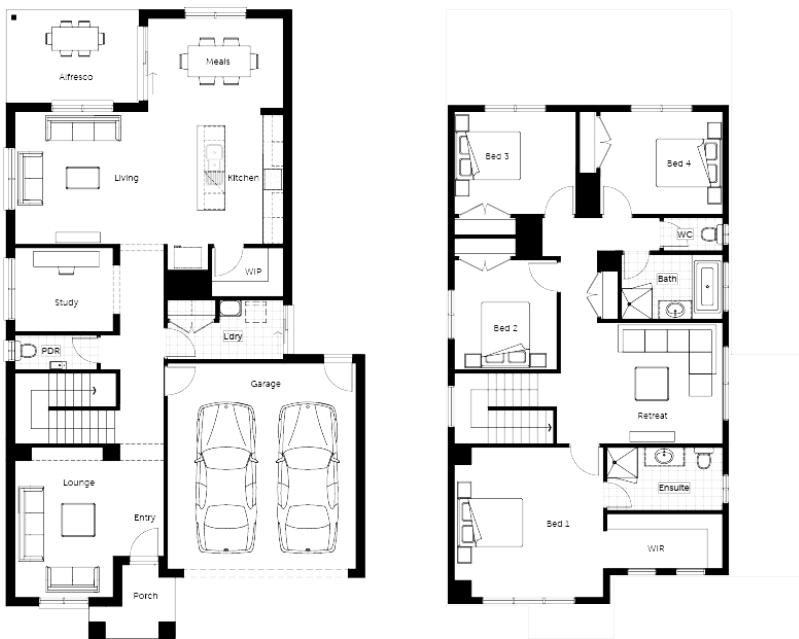


Address
 Lot 616 Maradona Boulevard, Deanside

Lot
 13.83m

House size
 29sq

Land size
 391m²



AREAS

House area	221.28m ²
Garage	37.20m ²
Porch	4.36m ²
TOTAL AREAS	272.23m²

Your Inclusions:

- Double glazing to all openable windows
- Refrigerated Cooling
- 2740mm high ceilings to ground floor
- 40mm stone edging to kitchen
- 20mm stone benchtops to wet areas
- 900mm Stainless Steel Appliances
- Flooring Throughout
- Driveway
- Site Costs
- Estate Covenants



Contact: Daniel Sekulic

m: 0416 232 485

e: daniel@granvuehomes.com.au

Price current as of 14/11/2021. Pricing based on Developer supplied engineering plans & Plan of Subdivision, Granvue Homes standard floorplan and standard façade. Granvue Homes reserves the right to change prices or terminate package without notice. Price does not include stamp duty, government charges or taxes, legal or bank charges. Pricing may vary due to availability of land, increase in land prices or developer / council requirements. Images are for illustrative purposes only and may include examples of upgrade items or items not supplied by Granvue Homes. Please refer to working drawings for specific measurements and details. Although every effort has been made to ensure information accuracy, Granvue Homes makes no guarantees or assurances that all estimated costs and information supplied by third parties are correct at the time of publication. For specific details on home inclusions as part of this package please obtain a detailed quotation from a Granvue New Home Consultant. This house and land package is yet to be constructed. The images and floorplans in this publication are exclusively owned by Granvue Homes and cannot be reproduced or copied either wholly or in part, in any form without the written permission of Granvue Homes. © Granvue Homes 2018